

FIG. 1816.1 TERMITE PROTECTION. TERMITE PROTECTION SHALL BE PROVIDED BY REGISTERED TERMINATORS, INCLUDING SOL-APPLIED TERMITIDES, BAITING SYSTEMS AND PESTICIDES APPLIED TO WOOD OR OTHER APPROVED METHODS OF TERMITE PROTECTION LABELED FOR USE AS A PREVENTATIVE TREATMENT TO NEW CONSTRUCTION. SEE SECTION 202. REGISTERED TERMINATOR, UPON COMPLETION OF TERMITE PROTECTIVE TREATMENT, A CERTIFICATE OF COMPLIANCE SHALL BE ISSUED TO THE BUILDING DEPARTMENT BY THE LICENSED PEST CONTROL COMPANY THAT CONTAINS THE FOLLOWING STATEMENT: "THE BUILDING HAS RECEIVED A COMPLETE TREATMENT FOR THE PREVENTION OF SUBTERANEAN TERMITES. TREATMENT IS IN ACCORDANCE WITH RULES AND LAWS ESTABLISHED BY THE FLORIDA DEPARTMENT OF AGRICULTURE AND CONSUMER SERVICES."

R4409.6.17.2.4.2 Special Inspector (Trusses)
For trusses having an overall length of the bottom chord in excess of 35 feet (10.7 m) or 6 feet (1822 mm) overall height erection shall be supervised by either a registered professional engineer or registered architect retained by the shop drawings as part of the permit documents.

R4409.13.5 Termite protection. All buildings shall have a pre-construction termiticide application and subterranean termite treatment. The rules and laws as established by the Florida Department of Agriculture and Consumer Services shall be deemed as approved with respect to preconstruction soil treatment for protection against subterranean termites. A certificate of compliance shall be issued by the licensed pest control company that contains the following statement: "The building has received a complete treatment for the prevention of subterranean termites. Treatment is in accordance with rules and laws established by the Florida Department of Agriculture and Consumer Services."

R4409.9.2.5 Nail spacing shall be 6 inches (152 mm) on center at panel edges and at intermediate supports. Nail spacing shall be 4 inches (102 mm) on center at gable ends with either 6d ring shank nails or 10d common nails.

AREA CALCULATION

AC AREA 1st Flr	=	3068 SF
AC AREA 2nd Flr	=	3161 SF
TOTAL A/C AREA	=	6229 SF
COVERED PATIO	=	399 SF
BALCONY	=	399 SF
FRONT BALCONY	=	140 SF
2 CAR GARAGE	=	531 SF
1 CAR GARAGE	=	324 SF
FRONT PORCH	=	140 SF
TOTAL AREA	=	8162 SF

TYPE OF CONSTRUCTION :
TYPE V , OCCUPANCY GROUP R3

DESIGN: ODYSSEY INC.
REG. # 00000007 BLDG
FORT LAUDERDALE FL 33309
REG. # 00000007 ARCHT
GREGORY A. JONES ARCHITECT
REG. # 00000007 ENG
KODJAL ENGINEERING, INC.
326 S.W. 5th Street
Fort Lauderdale, FL 33301
Phone: 954-253-4995
State of Florida, P.E. No. 25665 CA-0408

EXTERIOR WINDOW AND DOOR SCHEDULE

TYPE/NOTE	QUANTITY	REMARKS
1	1	6" x 6" x 1/2" ALUMINUM WINDOW
2	1	6" x 6" x 1/2" ALUMINUM WINDOW
3	1	6" x 6" x 1/2" ALUMINUM WINDOW
4	1	6" x 6" x 1/2" ALUMINUM WINDOW
5	1	6" x 6" x 1/2" ALUMINUM WINDOW
6	1	6" x 6" x 1/2" ALUMINUM WINDOW
7	1	6" x 6" x 1/2" ALUMINUM WINDOW
8	1	6" x 6" x 1/2" ALUMINUM WINDOW
9	1	6" x 6" x 1/2" ALUMINUM WINDOW
10	1	6" x 6" x 1/2" ALUMINUM WINDOW
11	1	6" x 6" x 1/2" ALUMINUM WINDOW
12	1	6" x 6" x 1/2" ALUMINUM WINDOW
13	1	6" x 6" x 1/2" ALUMINUM WINDOW
14	1	6" x 6" x 1/2" ALUMINUM WINDOW
15	1	6" x 6" x 1/2" ALUMINUM WINDOW
16	1	6" x 6" x 1/2" ALUMINUM WINDOW
17	1	6" x 6" x 1/2" ALUMINUM WINDOW
18	1	6" x 6" x 1/2" ALUMINUM WINDOW
19	1	6" x 6" x 1/2" ALUMINUM WINDOW
20	1	6" x 6" x 1/2" ALUMINUM WINDOW
21	1	6" x 6" x 1/2" ALUMINUM WINDOW
22	1	6" x 6" x 1/2" ALUMINUM WINDOW
23	1	6" x 6" x 1/2" ALUMINUM WINDOW
24	1	6" x 6" x 1/2" ALUMINUM WINDOW
25	1	6" x 6" x 1/2" ALUMINUM WINDOW
26	1	6" x 6" x 1/2" ALUMINUM WINDOW
27	1	6" x 6" x 1/2" ALUMINUM WINDOW
28	1	6" x 6" x 1/2" ALUMINUM WINDOW
29	1	6" x 6" x 1/2" ALUMINUM WINDOW
30	1	6" x 6" x 1/2" ALUMINUM WINDOW
31	1	6" x 6" x 1/2" ALUMINUM WINDOW
32	1	6" x 6" x 1/2" ALUMINUM WINDOW
33	1	6" x 6" x 1/2" ALUMINUM WINDOW
34	1	6" x 6" x 1/2" ALUMINUM WINDOW
35	1	6" x 6" x 1/2" ALUMINUM WINDOW
36	1	6" x 6" x 1/2" ALUMINUM WINDOW
37	1	6" x 6" x 1/2" ALUMINUM WINDOW
38	1	6" x 6" x 1/2" ALUMINUM WINDOW
39	1	6" x 6" x 1/2" ALUMINUM WINDOW
40	1	6" x 6" x 1/2" ALUMINUM WINDOW
41	1	6" x 6" x 1/2" ALUMINUM WINDOW
42	1	6" x 6" x 1/2" ALUMINUM WINDOW
43	1	6" x 6" x 1/2" ALUMINUM WINDOW
44	1	6" x 6" x 1/2" ALUMINUM WINDOW
45	1	6" x 6" x 1/2" ALUMINUM WINDOW
46	1	6" x 6" x 1/2" ALUMINUM WINDOW
47	1	6" x 6" x 1/2" ALUMINUM WINDOW
48	1	6" x 6" x 1/2" ALUMINUM WINDOW
49	1	6" x 6" x 1/2" ALUMINUM WINDOW
50	1	6" x 6" x 1/2" ALUMINUM WINDOW
51	1	6" x 6" x 1/2" ALUMINUM WINDOW
52	1	6" x 6" x 1/2" ALUMINUM WINDOW
53	1	6" x 6" x 1/2" ALUMINUM WINDOW
54	1	6" x 6" x 1/2" ALUMINUM WINDOW
55	1	6" x 6" x 1/2" ALUMINUM WINDOW
56	1	6" x 6" x 1/2" ALUMINUM WINDOW
57	1	6" x 6" x 1/2" ALUMINUM WINDOW
58	1	6" x 6" x 1/2" ALUMINUM WINDOW
59	1	6" x 6" x 1/2" ALUMINUM WINDOW
60	1	6" x 6" x 1/2" ALUMINUM WINDOW
61	1	6" x 6" x 1/2" ALUMINUM WINDOW
62	1	6" x 6" x 1/2" ALUMINUM WINDOW
63	1	6" x 6" x 1/2" ALUMINUM WINDOW
64	1	6" x 6" x 1/2" ALUMINUM WINDOW
65	1	6" x 6" x 1/2" ALUMINUM WINDOW
66	1	6" x 6" x 1/2" ALUMINUM WINDOW
67	1	6" x 6" x 1/2" ALUMINUM WINDOW
68	1	6" x 6" x 1/2" ALUMINUM WINDOW
69	1	6" x 6" x 1/2" ALUMINUM WINDOW
70	1	6" x 6" x 1/2" ALUMINUM WINDOW
71	1	6" x 6" x 1/2" ALUMINUM WINDOW
72	1	6" x 6" x 1/2" ALUMINUM WINDOW
73	1	6" x 6" x 1/2" ALUMINUM WINDOW
74	1	6" x 6" x 1/2" ALUMINUM WINDOW
75	1	6" x 6" x 1/2" ALUMINUM WINDOW
76	1	6" x 6" x 1/2" ALUMINUM WINDOW
77	1	6" x 6" x 1/2" ALUMINUM WINDOW
78	1	6" x 6" x 1/2" ALUMINUM WINDOW
79	1	6" x 6" x 1/2" ALUMINUM WINDOW
80	1	6" x 6" x 1/2" ALUMINUM WINDOW
81	1	6" x 6" x 1/2" ALUMINUM WINDOW
82	1	6" x 6" x 1/2" ALUMINUM WINDOW
83	1	6" x 6" x 1/2" ALUMINUM WINDOW
84	1	6" x 6" x 1/2" ALUMINUM WINDOW
85	1	6" x 6" x 1/2" ALUMINUM WINDOW
86	1	6" x 6" x 1/2" ALUMINUM WINDOW
87	1	6" x 6" x 1/2" ALUMINUM WINDOW
88	1	6" x 6" x 1/2" ALUMINUM WINDOW
89	1	6" x 6" x 1/2" ALUMINUM WINDOW
90	1	6" x 6" x 1/2" ALUMINUM WINDOW
91	1	6" x 6" x 1/2" ALUMINUM WINDOW
92	1	6" x 6" x 1/2" ALUMINUM WINDOW
93	1	6" x 6" x 1/2" ALUMINUM WINDOW
94	1	6" x 6" x 1/2" ALUMINUM WINDOW
95	1	6" x 6" x 1/2" ALUMINUM WINDOW
96	1	6" x 6" x 1/2" ALUMINUM WINDOW
97	1	6" x 6" x 1/2" ALUMINUM WINDOW
98	1	6" x 6" x 1/2" ALUMINUM WINDOW
99	1	6" x 6" x 1/2" ALUMINUM WINDOW
100	1	6" x 6" x 1/2" ALUMINUM WINDOW

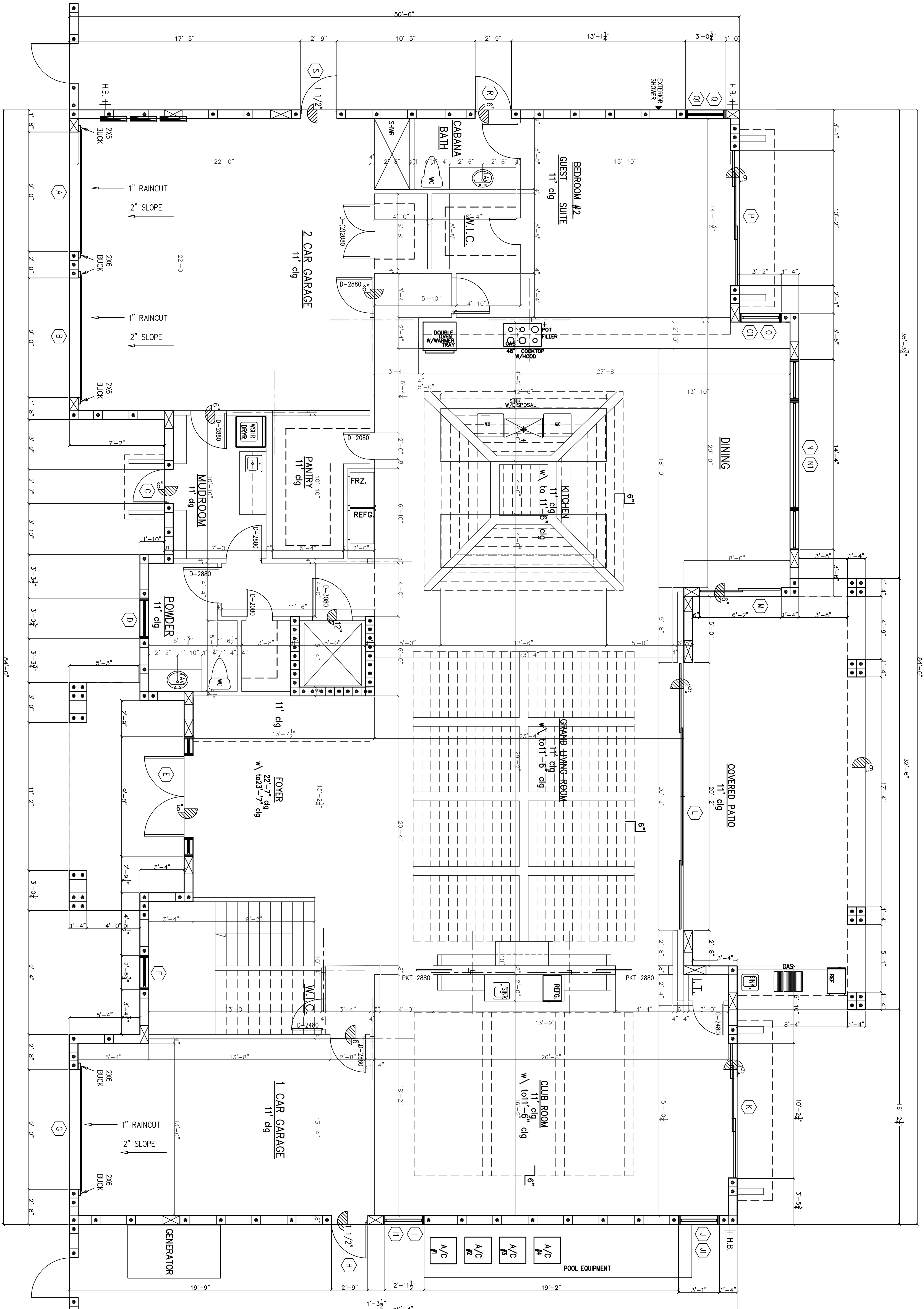
SCHEDULE NOTES

1. ALL WINDOWS AND DOORS ARE LABELED FROM THE SCHEDULE TO BE AS CALLED FOR IN THE SCHEDULE. ALL WINDOWS AND DOORS SHALL BE INSTALLED IN ACCORDANCE WITH THE SCHEDULE. ALL WINDOWS AND DOORS SHALL BE INSTALLED IN ACCORDANCE WITH THE SCHEDULE. ALL WINDOWS AND DOORS SHALL BE INSTALLED IN ACCORDANCE WITH THE SCHEDULE.
2. ALL WINDOWS AND DOORS SHALL BE INSTALLED IN ACCORDANCE WITH THE SCHEDULE. ALL WINDOWS AND DOORS SHALL BE INSTALLED IN ACCORDANCE WITH THE SCHEDULE. ALL WINDOWS AND DOORS SHALL BE INSTALLED IN ACCORDANCE WITH THE SCHEDULE.
3. ALL WINDOWS AND DOORS SHALL BE INSTALLED IN ACCORDANCE WITH THE SCHEDULE. ALL WINDOWS AND DOORS SHALL BE INSTALLED IN ACCORDANCE WITH THE SCHEDULE. ALL WINDOWS AND DOORS SHALL BE INSTALLED IN ACCORDANCE WITH THE SCHEDULE.
4. ALL WINDOWS AND DOORS SHALL BE INSTALLED IN ACCORDANCE WITH THE SCHEDULE. ALL WINDOWS AND DOORS SHALL BE INSTALLED IN ACCORDANCE WITH THE SCHEDULE. ALL WINDOWS AND DOORS SHALL BE INSTALLED IN ACCORDANCE WITH THE SCHEDULE.
5. ALL WINDOWS AND DOORS SHALL BE INSTALLED IN ACCORDANCE WITH THE SCHEDULE. ALL WINDOWS AND DOORS SHALL BE INSTALLED IN ACCORDANCE WITH THE SCHEDULE. ALL WINDOWS AND DOORS SHALL BE INSTALLED IN ACCORDANCE WITH THE SCHEDULE.

AREA CALCULATION

AREA SQ FT	ZONE 4	ZONE 5
10-30	-58	-72
30-50	+54	+54
50-70	-55	-66
70-100	+51	+51
100 OR GREATER	-52	-57
	+47	+47
	+46	+46

BASED ON 175 MPH EXP. TD ACSSB-7-16



As per FIG R309.1.1 Duct penetration. Ducts in the garage and ducts penetrating the walls or ceilings separating the dwelling from the garage shall be constructed of 1/2" gage (1.27 mm) galvanized steel sheet metal with a fire-rated gasket and shall have a fire-rated gasket on the opening into the garage.

As per FIG R309.1.1 Separation required in garages. The garage shall be separated from the residence and its attic area by not less than 1/2" (12.7 mm) gypsum board applied to the garage side. Garages beneath habitable rooms shall be separated from all habitable rooms above separation is a ceiling assembly. The structure supporting the separation shall also be protected by not less than 1/2" (12.7 mm) gypsum board or equivalent.

NOTE: CEILING DETAILS AS PER OWNER/BUILDER REQUEST. SEE REFLECTED CEILING PLAN.

FIRST FLOOR PLAN

SCALE: 1/4"=1'-0"

FINISHED FLOOR AT 6.25' NAVD

REVISIONS	BY

SUMMIT BUILDERS OF FLORIDA
2337 NE 28 STREET,
LOT : 25 BLOCK : 7
LIGHTHOUSE POINT , Florida

DESIGN ODYSSEY Inc.
Architectural Drafting

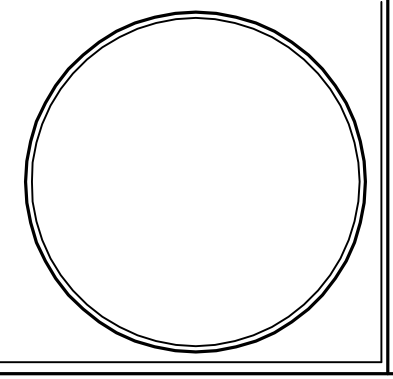
1601 LAUDERDALE BLVD
FORT LAUDERDALE, FL 33309
Phone (954) 418-7111
Direct (954) 547-4441
Fax (954) 547-4441
www.designodyssey.com
www.designodyssey.net

DESIGNED BY: ABEY
DRAWN BY: TE
CHECKED BY:
DATE: 4/1/2021

Sheet:
A1
2 of 18

DESIGN ODYSSEY, INC.
 REG. # 00000197 BLDG
 FORT LAUDERDALE, FL 33309
 PREGORY A. JONES ARCHITECT
 REG. # 00000197 BLDG
 2327 E. UNIVERSITY BLVD
 SUITE 200
 FORT LAUDERDALE, FL 33304
 PHONE: 954.253.4995
 STATE OF FLORIDA, P.E. NO. 23903 CA-0018

REVISIONS	BY



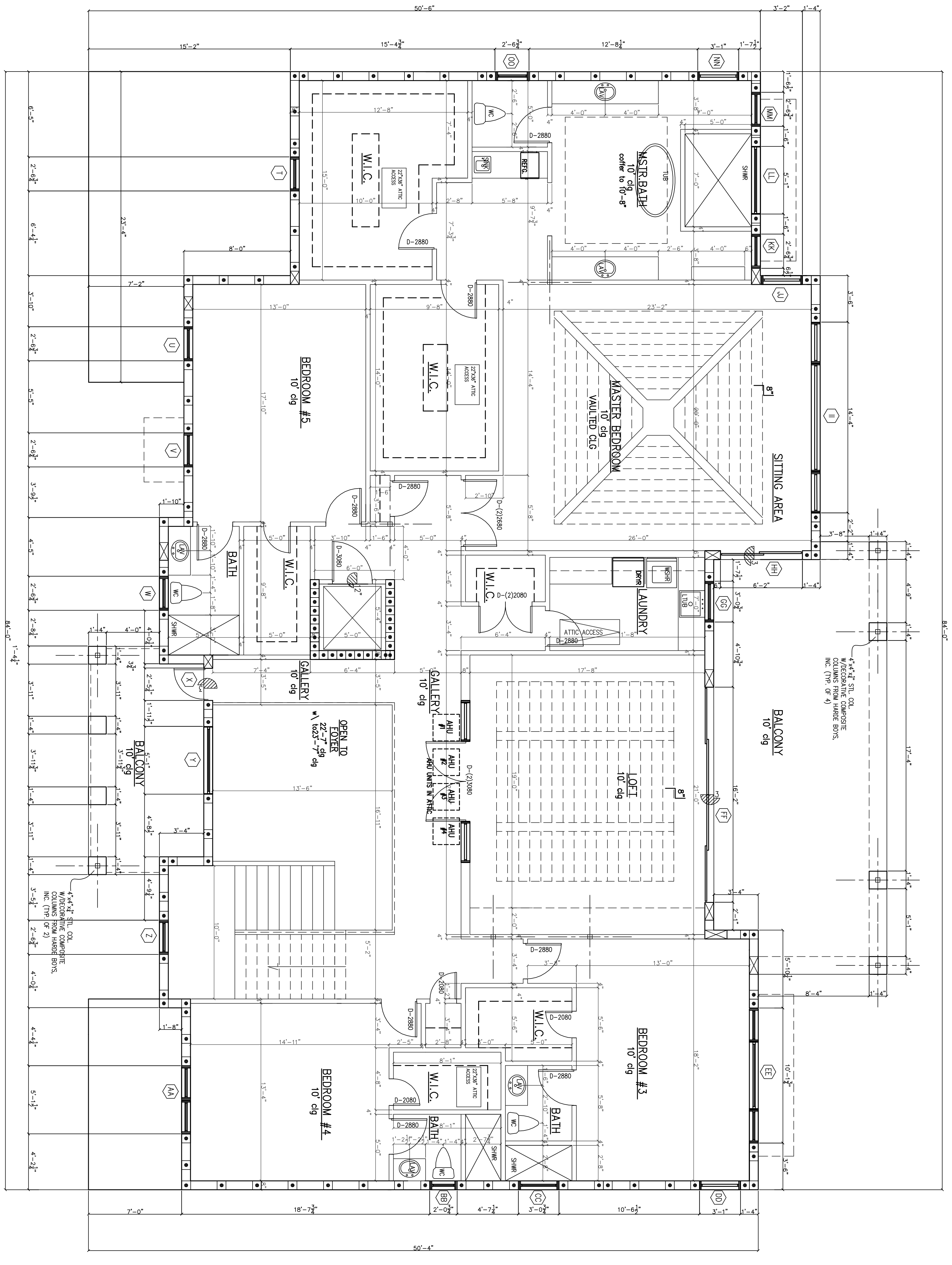
SUMMIT BUILDERS OF FLORIDA
 2337 NE 28 STREET,
 LOT :25 BLOCK : 7
 LIGHTHOUSE POINT , Florida

DESIGN ODYSSEY, Inc.
Architectural Detail

8851 W. COMMERCE BLVD
 FORT LAUDERDALE, FL 33309
 Phone (954) 418-7111
 Direct Fax (954) 547-4444
 e-mail: designodyssey@gmail.com
 WWW.DESIGNODYSSEY.COM

DESIGNED BY: ABEY
 DRAWN BY: TE
 CHECKED BY:
 DATE: 4/1/2021

Sheet:
A2
 3 of 18



NOTE: CEILING DETAILS AS PER OWNER/BUILDER REQUEST. SEE REFLECTED CEILING PLAN.

SECOND FLOOR PLAN

SCALE: 1/4"=1'-0"

FINISHED FLOOR AT 6.25' NAVD